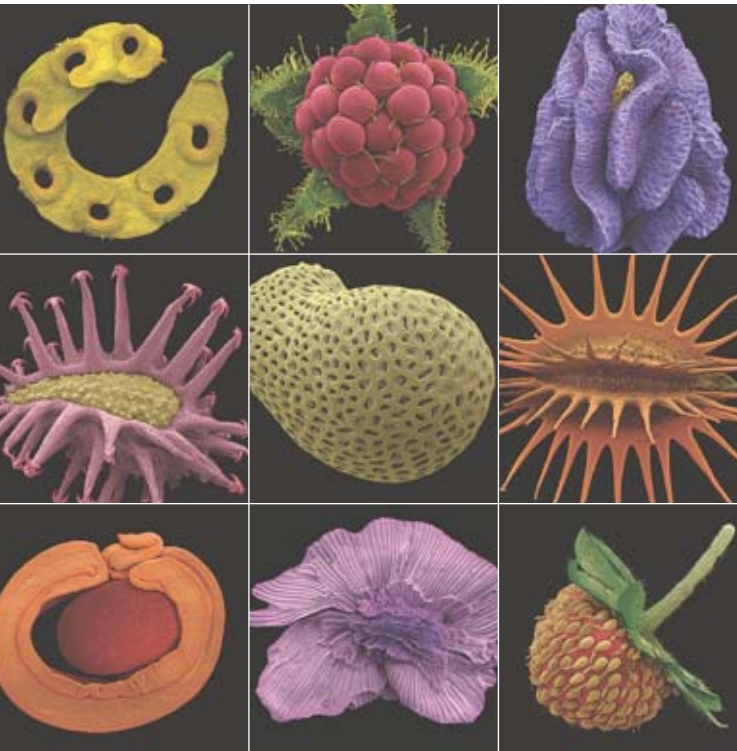


Wakehurst

Discover Kew's
Millennium Seed Bank



FRUIT - Edible inedible inedible & SEEDS - Time Capsule of Life - Wolfgang Stuppy & Rob Keweler - Papadakis Publisher, London

- Take the Seed Safari Trail
- Try our interactive exhibition
- Observe conservation at work
- Look into the labs

KIDS GO FREE

www.kew.org

Kew at Wakehurst
PLANTS PEOPLE POSSIBILITIES

Visit the heart of the world's biggest wild plant seed bank

Life on earth depends on plants – by saving seeds we can save plants

- Help us celebrate reaching our 10th anniversary target of 24,000 species banked
- Support our aspiration to safeguard 25% of the world's threatened plants by 2020
- Follow our progress in building a global network to repair and restore damaged habitats



For further information about the Millennium Seed Bank and details on how you can support our vital work, visit www.kew.org/msbp



Conservation for the future

A unique home for wildlife and plants

- Two nature reserves of national importance
- Compost corner – mulch on a grand scale
- Internationally rare sandstone outcrops
- Unique wetland habitats

Events and festivals

www.kew.org/events

Hands-on for all ages, through the seasons

- Celebrating UK wildflowers and woodland
- Spring flower and autumn colour weekends
- Family activities and school visits
- Christmas festival programme

New for 2009 – beautiful exhibitions of wild flower meadows and fruits in stunning close up

Wakehurst

Explore Kew's stunning country estate



- Walk 300 breathtaking acres
- Admire exotic plant collections
- Visit two nature reserves
- See rare and endangered trees

KIDS GO FREE

www.kew.org

Kew at Wakehurst
PLANTS PEOPLE POSSIBILITIES

Wakehurst

Surprise your senses
every season



- Glory in the autumn tints
- Enjoy bracing woodland walks
- Taste home-cooked seasonal food
- Wonder at the winter landscape

KIDS GO FREE

Kew at Wakehurst
PLANTS PEOPLE POSSIBILITIES

www.kew.org

At Kew's country estate, there is always something colourful to see

The seasons – flowers all year

Spring – see nature awake

- Native wildflowers and bluebell woods
- A host of daffodils, crocuses and snowdrops
- Rhododendrons, magnolias and camellias
- Scents in the wild flower meadows
- Enjoy the sheer beauty of spring

Summer – a riot of glorious colour

- Iris dell and water gardens
- Bubbling brooks, streams and ponds
- Cool shade and dappled woodland
- Exotic scent of summer
- Revel in nature's abundance



Autumn – colour right off the scale

- Seasonal tints from around the globe
- Mushrooms and toadstools
- Nature's barks and berries
- Stunning vistas and water reflections
- Wander through woodlands of the world

Winter – brightening dark days

- Vibrant colour to cheer the heart
- Dramatic scents to lift the spirit
- Striking woodland architecture
- UK's largest growing Christmas tree
- Marvel at the magical winterland

Save money with a season ticket and
enjoy year-round beauty and brilliance
at Wakehurst.

Admission

Open daily from 10am (*except 24 and 25 Dec).

Summer closing (Mar – Oct) 6pm. Winter closing (Nov – Feb) 4.30pm. Last admission 30mins before closing.

Entry

Children (under 17) FREE.

Adults £10. Annual season ticket (allowing entry for a full 12 months) just £20 (2009/10 prices). Group discounts apply.

Food and drink

Have a drink or snack in the Seed Café, our coffee shop in the Visitor Centre. Take lunch or enjoy afternoon tea in The Stables, our popular counter-service family restaurant with children's menu. Picnic anywhere in the gardens, including at dedicated sites with tables.

Free tours of the gardens operate daily, subject to the availability of a guide.

Shopping

Browse the extensive ranges in our gift shop and plant centre.

Travel

By road, the gardens are on the B2028 between Turners Hill and Ardingly. Junction 10 off the M23. Follow brown tourist signs. Car and coach parking, cycle racks.

By rail to Haywards Heath (6 miles) or Three Bridges (11 miles).

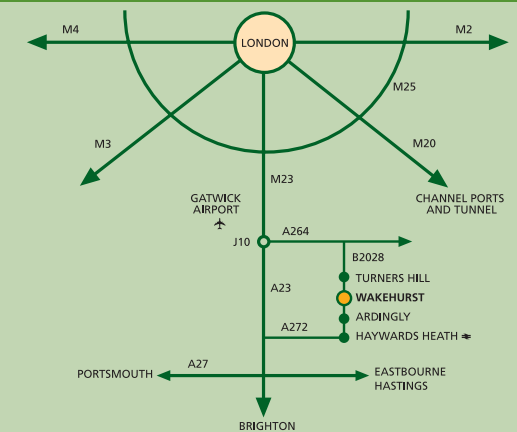
By bus from Crawley and Haywards Heath.
www.metrobus.co.uk

Information

Groups welcome, bookings 01444 894067. School visits by advanced booking 01444 894055.

Assistance dogs only. Ball games in the recreation area only. Free loan wheelchairs, and electric buggies by advanced application. The buildings close before the gardens, so it is a good idea to visit them first.

Wakehurst, Ardingly, West Sussex RH17 6TN
24 hr info line 01444 894066 www.kew.org



Proceeds from admissions, events, shops and catering go towards the £2 million annual upkeep of the estate.

Details correct at time of printing but subject to change without notice.



60% of Kew's funding comes from defra



A member of the Great Gardens of Sussex group
www.greatgardensofsussex.com

